



CITY CONNECTION

Spring Newsletter – April 2025



WELCOME TO OUR NEWSLETTER!

We're excited to also offer an online version of our newsletter that is optimized with clickable hyperlinks for quicker access to information.

The newsletter will still be available in print in limited quantities, and you can even print the digital newsletter at home.



GRAND OPENING OF FIRE STATION 20

The ribbon-cutting ceremony for the brand new Fire Station 20 was a great success! After being rescheduled due to Hurricanes Helene and Milton, the City of South Pasadena officially unveiled the new facility, celebrating the hard work that went into its construction and the commitment to public safety that made the project possible. Attendees had the opportunity to tour the station and gather valuable information about fire safety. Thank you to everyone who joined us for this special occasion! See more photos on page 4.



Are You Prepared for Hurricane Season?

Join us at an upcoming hurricane preparedness seminar to make sure you are ready when hurricane season starts June 1st.

See page 9 for details!



www.mysouthpasadena.com



727-347-4171



7047 Sunset Dr. S., South Pasadena, FL 33707



SPECIAL COMMISSION MEETING

At the Special Commission Meeting, the City Commission confirmed the results of the March 11, 2025 election as follows:

Candidate and Votes:

Mark McAlees - 150

Benjamin F. Thomas - 137

Lynda Thompson - 282

Total - 569



The oath of office was administered to Mark McAlees and Lynda Thompson, who were sworn in to serve four year terms. Congratulations, Commissioner McAlees and Commissioner Thompson!

The Commission also presented Ben Thomas with a token of appreciation for his contributions to the community. Thomas was a dedicated and uplifting public servant as a member of the City Commission from 2018-2025.



2025 COMMISSION DEPARTMENT ASSIGNMENTS

At the March 25, 2025 Regular Commission Meeting, the City Commission voted on department assignments for the coming year as follows:

Commissioner Mark McAlees – Community Improvement Department

Commissioner Gail Neidinger – Finance Department

Commissioner Tom Reid – Public Works Department

Commissioner Lynda Thompson – Public Safety Department

Also at the March 25th meeting, Tom Reid was appointed as Vice Mayor. For information about the City Commission, please contact City Hall at cityhall@mysouthpasadena.com.



PAVILION UPDATE

We're happy to share that construction of the pavilion at Maynard A. Duryea Bay View Park is progressing smoothly! Despite some delays caused by recent storms, the project remains on schedule and may even be completed ahead of time. We can't wait to see this new addition come to life for the community! Stay tuned for more updates.





Arthur Penny
Mayor, City of South Pasadena
apenny@mysouthpasadena.com

"MY CITY: I'm Part of It, I'm Proud of It."

Dear Friends and Neighbors,

The South Pasadena election results are in. I want to thank Ben Thomas for serving this City for the past eight years. Ben's dedication to the city was unwavering, his years of knowledge invaluable.

And we welcome Mark McAlees, Mark was sworn in as a new Commissioner during our March 25th Special Commission meeting. We are all looking forward to having Mark on the Commission and to what he will bring to "Our Place in the Sun".

Hurricane and Severe Weather Preparedness

Our city was hit hard last year and while we hope for a calm storm season, we all need to take it seriously and prepare now. The 2025 Atlantic Hurricane Season officially kicks off June 1 and runs through November 30. This is the peak time of year for hazardous storms to develop that may threaten Florida's shores.

The Fire Department provides transportation assistance to a public shelter for those who have no other method of getting there. You must be pre-registered for this service. Call them at (727) 344-1666 for information. Do not wait until an evacuation order has been issued and register only if you cannot get to a shelter on your own.

Know your evacuation zone and options. In the City of South Pasadena, it may be necessary to evacuate. Pinellas County has put together an extensive list of resources available to residents on its Emergency Management Website: <https://pinellas.gov/departments/emergency-management/>

Public Works Report

- The contractor continues to work on the Bay View Park pavilion. They are moving along very well. It's starting to look like a masterpiece. Reconstruction of the playground began on Monday 3/17/2025.
- All the damaged boats have been removed from the waters at Fred Held Park.
- Public Works just finished a total revamp of the Pasadena Avenue median in front of the hospital, placing new plants and palm trees. The guys did great work on this.
- The City's debris contractor has completed all the pickups. So, if you have put debris out at the curb, you must make your own arrangements to have it removed.
- Public Works has been working with the Finance Department dealing with Insurance, FEMA and Florida Department of Emergency Management.
- The repair of the Public Works Shop and Annex will begin soon.

Flood Awareness Week

March 3rd to 9th was Flood Awareness Week. Take the time to evaluate the extra coverage you might need. For more information, visit: www.floodsmart.gov/know-your-risk

Sincerely,

Mayor Arthur Penny



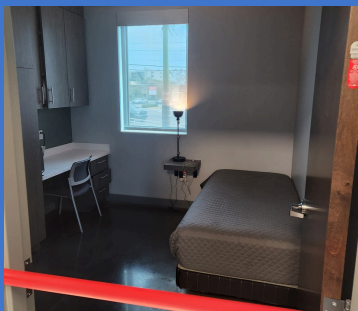
FIRE STATION 20 GRAND OPENING



**"This station was built with response readiness,
turnout times, and firefighter safety in mind."
– Chief Mixson**



We had an incredible time welcoming the community to our brand-new fire station! Guests enjoyed refreshments in the bay while getting up-close tours of all our rigs. Visitors also had the chance to explore vendor tables from HCA South Pasadena and Revive in Time, learning about valuable health and wellness resources.



In addition to checking out our emergency vehicles, guests were invited inside the station for a behind-the-scenes look at where our firefighters live and train. Visitors explored the dorms, offices, training rooms and more, getting a true feel for daily life at the station. Thank you to everyone who joined us in celebrating this exciting milestone!



DEDICATION IN ACTION



Congratulations to Vice Mayor Tom Reid on his appointment as Secretary/Treasurer of the Pinellas Suncoast Transit Authority (PSTA) Board of Directors!

Vice Mayor Reid has been an active representative for South Pasadena, serving on several key boards and committees. In August, he joined the Florida League of Cities (FLC) Board of Directors, in September, he was named Vice Chair of the PSTA Finance Committee and elected to the PSTA Executive Committee for 2024/2025, and in October, he became President of the Suncoast League of Cities.

His involvement in these organizations helps promote the interests of South Pasadena's residents and businesses.

Thank you for your continued dedication, Vice Mayor Reid!

1 in 4 children in our area face hunger, and the need increases during summer when school meals aren't available. You can help by donating cereal and non-perishable breakfast items at City Hall—look for the Cereal for Summer box in the lobby.

This is the 10th year 10 Tampa Bay and Feeding Tampa Bay have teamed up to fight child hunger, and the City of South Pasadena is proud to contribute. You can also donate online at www.CerealForSummer.org.

You can drop off your boxes of cereal and other breakfast items at:

City of South Pasadena City Hall
7047 Sunset Drive S.
South Pasadena, FL 33707
May 1st–May 30th

For more information about this year's drive, contact 10 Tampa Bay's Donna Baker DBaker@10tampabay.com.



About Town in South Pasadena

A Series from Commissioner Lynda Thompson

South Pasadena is fortunate to have been chosen to have HCA Florida Pasadena Hospital in our community located at 1501 Pasadena Ave. South. It opened over 40 years ago as Palms of Pasadena Hospital. It is now a 307-bed hospital which offers a broad range of inpatient and outpatient care with specialty programs including Orthopedics, Cardiology, Surgical Weight Management, Breast Health, Wound Care, Diagnostics and Physical Rehabilitation. HCA Hospital is committed to advancing healthcare to best serve our community.



CEO Brent Burish of HCA Florida Pasadena recently participated in the Grand Opening of the new South Pasadena Fire Station highlighting the importance of partnership with the Fire Department which is right next to the hospital, therefore reducing emergency response time.

In the About Town in South Pasadena series, the City Commission will be selecting local businesses to be featured in the City Connection Newsletter.

If you are interested in having your business included in the series, please contact City Hall at cityhall@mysouthpasadena.com.

A Special Thank You to Pasadena Community Church



Mayor Arthur Penny and Fire Chief David Mixson proudly presented a plaque to Pasadena Community Church in recognition of their contributions to the City's emergency operations during Hurricane Helene and Hurricane Milton.

Pasadena Community Church served as the Emergency Operations Center (EOC) for the cities of South Pasadena, Treasure Island, and St. Pete Beach, which entailed opening their facilities to municipal staff and providing volunteers to assist onsite.

Special thank you to church representatives Anita Marshall, Paul Marshall, Pastor Nicole Logan, Pastor Gary Logan, CJ Brandt, Bruce Castle and Steve Salvaggio for their dedicated service throughout both storm events.





SOUTH PASADENA FIRE DEPARTMENT NAMED HURRICANE RESPONSE TEAM OF THE YEAR

The South Pasadena Fire Department (PAFD) has been recognized with the Hurricane Response Team of the Year award at the John Morroni Legacy Foundation's 29th Annual Law Enforcement and First Responder Appreciation Dinner, held on Saturday, March 1, 2025. This prestigious award highlights the department's extraordinary efforts during Hurricane Helene, a storm that brought historic storm surges and devastating conditions to Pinellas County.



A NIGHT OF HEROISM

When Hurricane Helene made landfall, emergency responders faced unprecedented challenges. Floodwaters quickly rose, cutting off access to homes and stranding residents in dangerous conditions. In the midst of this crisis, a structure fire was reported in an area that traditional fire apparatus could not reach. Without hesitation, members of the South Pasadena Fire Department took swift action.

Using a combination of resourcefulness and determination, firefighters navigated chest-deep floodwaters on foot, carrying essential equipment, while others coordinated transportation via a Pinellas County Sheriff's Office inflatable watercraft. When they reached the fully engulfed structure, they prevented the fire from spreading further.

However, their heroism didn't stop there.

Spotting a faint flashlight beam inside a neighboring home—one that was at risk of catching fire—firefighters quickly moved into action. They entered the structure and successfully rescued a resident and their pet, ensuring they made it to safety. Their decisive and selfless actions that night were a testament to the courage and skill that define PAFD.





COMMITMENT TO PREPAREDNESS

Fire Chief David Mixson, who nominated the crew for the Hurricane Response Team of the Year award, emphasized the importance of adaptability in emergency response. In the face of extreme weather events like Hurricane Helene, firefighters must be prepared to think on their feet, utilizing every tool and resource available to protect the community.

Recognizing the increasing severity of hurricanes, the department has already taken proactive steps to enhance future response efforts. PAFD has acquired a 14.5-foot inflatable rescue boat with a 30HP outboard motor, funded through a partnership with a local business. Additionally, the City of South Pasadena Commission has approved the conversion of a 2003 Stewart & Stevenson M1078A1 Light Medium Tactical Vehicle (LMTV) into a High-Water Rescue Vehicle, further strengthening the City's ability to respond to severe flooding events.

A HUMBLING HONOR

During the awards dinner, Chief Mixson and members of the department expressed their gratitude for the recognition. In his acceptance speech, Chief Mixson honored the firefighters who put their lives on the line that night, saying, "What happened during Hurricane Helene is a testament to the bravery and resourcefulness of our firefighters. We don't do this for recognition."

The plaque presented to PAFD reads:

"For exceptional dedication and efforts above and beyond the call of duty on behalf of the Citizens of Pinellas County." The South Pasadena Fire Department is deeply honored to receive this award and remains committed to serving and protecting the community, no matter the circumstances.





Hurricane Preparedness Presentation

**For hurricane season information and storm readiness tips, check out the South Pasadena Fire Department's upcoming Hurricane Preparedness Presentation series, hosted in person at Fire Station 20
1477 Pasadena Ave S, South Pasadena, FL 33707**

Seats are limited- email marketing@mysouthpasadena.com to secure your spot!

**Those unable to attend in person are welcome to virtually attend via Zoom.
The slide presentation will also be uploaded onto YouTube.**

May 15th at 9am

Webinar Link

<https://us02web.zoom.us/j/83418304428>

May 22nd at 2pm

Webinar Link

<https://us02web.zoom.us/j/83588253066>



These links are also posted on the City's website at www.mysouthpasadena.com.

Interested in having a live hurricane preparedness presentation at your business, condominium, or homeowner's association?

Contact the South Pasadena Fire Department at 727-344-1666.



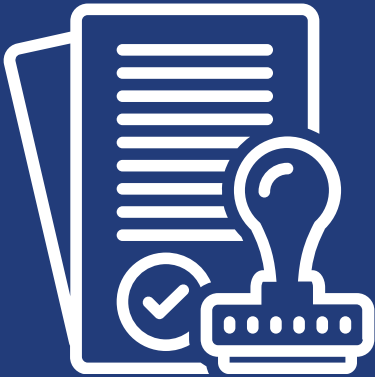
PULLING PERMITS FOR STORM REPAIRS?

To obtain permits for storm repairs in South Pasadena, Florida, you'll need to visit the Community Improvement Department.

Their office is located at 6940 Hibiscus Avenue South, South Pasadena, FL 33707.

The department is open for walk-ins Monday through Friday, from 7:30 A.M. to 12:30 P.M.

Remember - Before starting any storm-related repairs, ensure you secure the necessary permits, as all repairs and reconstruction require a permit and inspection, regardless of the extent of the damage.



PERMITTING UPDATE

October 1, 2024 – March 31, 2025

Total Permit Applications Received	945
Permits Issued	443
Incomplete Permit Applications Awaiting Additional Documentation	156
Permit Applications To Be Reviewed	69
Permit Applications Requiring Resubmittal	40
Completed Permits	178
Permit Applications Awaiting Payment of Fees	22
Voided Permits	37

Substantial Damage Determination Letters Sent	654
Substantial Damage Determinations Remaining	3



For more information about permitting activity or substantial damage determinations, contact the Community Improvement Department at buildingdepartment@mysouthpasadena.com or 727-343-4192.

Sun Benches



Sponsor Your Sun Bench Today!

Want to make your mark on South Pasadena? Consider sponsoring a Sun Bench! For a one-time cost of \$400, a personalized plaque will be added to the available bench of your choosing.

For more information, visit:

www.mysouthpasadena.com/community/sun_benches.ph

News from the Public Works Department

What happens when fats, oils, and grease are poured down the sink?

When warm fats, oils, and grease (FOG) are poured down the sink or flushed down the toilet, they may not travel very far through your pipes before they begin to form large, nasty conglomerations with other debris and chemicals and stick to the walls of your pipes. These FOG deposits could cause future sewer backups in your home, condominium, restaurant, or other building.

The results of FOG buildup in pipes include:

- Severe reduction in pipe flow capacity
- Complete blockages
- Slow drains
- Sewage backups
- Contact with disease-carrying bacteria
- Unnecessary costly repairs
- Contamination of water sources

NO GREASE

POURING FOOD, OILS, AND GREASE DOWN THE DRAIN IS **DESTRUCTIVE AND COSTLY!**

Beware the
F.O.G.

Prevent the
CLOG



- Do not put oil and grease in covered collection containers.
- Do not scrape food scraps from dishes into trash cans and garbage bags and dispose of properly. Avoid using the garbage disposal.
- Do not remove oil and grease from dishes, pans, fryers, and griddles. Cool first before you skim, scrape, or wipe off excess grease.

DO NOT pour oil and grease down the drain.
DO NOT put food scraps down the drain.
DO NOT rinse off oil and grease with hot water.

**For more information contact:
Public Works Department
727-384-0701**

Rev. 04/2025



DISPOSAL OF HOUSEHOLD CHEMICALS

Household Hazardous Waste Center (HHW)
2855 109th Avenue North, St. Petersburg, FL

Tuesday–Friday 7:00 a.m. – 5:00 p.m.
1st & 3rd Saturday of each month 7:00 a.m. – 5:00 p.m.
Closed on Sunday and all observed county holidays.



For more information, including what items to bring and what not to bring, call (727) 464-7500 or visit www.pinellascounty.org/solidwaste

AUTOMOTIVE/LEAD ACID BATTERIES/USED MOTOR OIL

Local drop off: Advance Auto Parts 4901 Gulfport Blvd. South (727) 323-2971
They will accept up to 5 gallons of motor oil.
Most auto parts retailers accept old vehicle batteries at no charge.

White Goods/Appliances (electric or gas)

Contact: Waste Connections at 727-572-6800

NO FREON ACCEPTED

Household Grease

Use paper towels to absorb grease; place in regular trash.



Rev. 04/2025

2025 PINELLAS COUNTY RECYCLE GUIDE

For more information on items that
can/cannot be recycled, call 727-464-7500
or visit www.pinellascounty.org/recycle



A Clean Environment Is Important To All Of Us!

ONLY RAIN DOWN THE STORM DRAIN!

Pollution Prevention Is Up To You!

Did you know that storm drains are NOT connected to sanitary sewer systems or treatment plants? The primary purpose of storm drains is to carry rainwater away from developed areas to prevent flooding. Untreated pollutants such as concrete, mortar, fertilizer in the grass clippings and many more flow directly into creeks, rivers, lakes and the ocean and are toxic to fish and other wildlife. Disposing of these materials into the storm drains causes serious ecological problems – and is PROHIBITED by law.

Best Management Practices

Best Management Practices, or BMP's, are procedures that help to prevent pollutants such as chemicals, concrete, mortar, pesticides, waste, paint and other hazardous materials from entering our storm drains. All of these sources add up to a pollution problem. But each of us can do our part to keep stormwater clean. The efforts add up to a pollution solution!

What Can You Do?

- Never sweep or blow grass/lawn clippings into driveways, sidewalks, streets, gutters or storm drains.
- Always store both dry and wet materials under cover, protected from rainfall and runoff and away from storm drains and waterways.
- Keep all construction debris away from the street, gutter and storm drains.
- Never dispose of washout into the street, storm drains, landscape drains, drainage ditches or streams.
- Look for and clean up material that may have traveled away from your property after each days work.
- If you or your contractor keep a dumpster at your site, be sure it is securely covered with a lid or tarp when not in use.
- Protect dry materials from the wind. Don't allow dry products to blow into driveways, sidewalks, streets, gutters or storm drains.
- Don't place fill material, soil or compost piles on the sidewalk or street.
- During cleanups, check the street and gutters for sediment, refuse or debris. Look around the corner or down the street and clean up any materials that may have already traveled away from your property.

WHO CAN YOU CONTACT?

FOR MORE INFORMATION, OR TO REPORT ILLEGAL DUMPING, PLEASE CALL:

Community Improvement Department
(727) 343-4192

Public Works Department
(727) 384-0701

REPORT ILLICIT DISCHARGES

169-25. ILLICIT DISCHARGES

Specific prohibitions. Any discharge to the stormwater system containing sewage, oil, or petroleum products, grass clippings, fertilizers, paints or paint solvents, industrial waste or other waste materials containing any materials in violation of federal, state, county or municipal laws, rules, regulations, orders or permits is prohibited.

Stormwater 24-Hour Watchline
727-464-5060

Rev. 04/2025



SURVIVING THE STORM

IT'S EVERYONE'S RESPONSIBILITY



STORM PREPAREDNESS GUIDELINES

The City of South Pasadena suggests utilizing the following guidelines in helping you prepare for the upcoming Hurricane Season. As we've seen in past seasons, even a single storm can have a dramatic impact on the community. The South Pasadena Fire Department urges all residents to prepare for hurricane season, regardless of the forecasted activity, as storms can affect us in unexpected ways. Be sure to have your emergency plans in place and stay informed as the season approaches.

PRE HURRICANE SEASON MAINTENANCE

Preparations should be completed long before the beginning of hurricane season June 1st.

- Cut back all trees and weak branches that could contact buildings.
- Thin your foliage so wind can flow freely through branches, decreasing the chance that the trees/plants will be uprooted. Keep gutters and drains free of debris.
- Place trimmings at the curb on Tuesdays/Fridays – the trimmings should not exceed 4 feet in length and 6 inches in diameter tied in bundles.
- Place small pieces of vegetation such as leaves, twigs, etc. in bags or cans that weigh less than 40 lbs. When full, place at the curb on your scheduled household waste pick up day.
- Clean your yard of any items that could become missiles in a storm such as old lumber, lawn furniture, barbrque grills, etc.
- Sign up for local alerts and warnings- <http://www.pinellascounty.org/alertpinellas>.
- Monitor local news and weather reports.
- Prepare to evacuate by learning evacuation routes, having a place to stay and packing a "go bag."
- Protect your property by reviewing insurance documents, making sure fuel tanks are anchored, installing sewer backflow valves and categorizing belongings.
- Collect and safeguard critical financial, medical, educational and legal documents.



ONCE A STORM HAS BEEN NAMED

- Follow guidance from local authorities.
- The City of South Pasadena is in an "A" evacuation zone.
- If advised to evacuate, grab your "go bag" and leave as soon as possible.
- Do not cut down trees, trim vegetation, do major yard work or construction projects that cause debris.
- Mass cutting places a tremendous burden on the normal collection process and there is not enough equipment or manpower to collect the additional material before the storm makes landfall. You could put not only yourself at risk but your neighbors as well.
- Do not take materials to the curb, transfer stations or landfill during a watch or warning period. Services may be suspended and facilities closed early to prepare for the storm.
- For protection from high winds, stay away from windows and seek shelter on the lowest level in an interior room. Install storm shutters on doors and windows.
- For protection from flooding, move to higher ground.
- Turn around, don't drown. Never walk or drive on flooded roads or through water.
- Call 911 if you are in life-threatening danger.

AFTER THE STORM HAS PASSED – PLEASE BE PATIENT!

- Return to the area only after authorities say it is safe to do so. Do not enter damaged buildings until they are inspected by qualified professionals.
- Never walk or drive on flooded roads or through floodwaters.
- Look out for downed or unstable trees and power lines.
- Wear gloves and sturdy shoes to protect your eyes and feet when removing debris.
- Keep household garbage, recycling and vegetative and/or construction storm debris in separate piles.
- The City of South Pasadena's number one priority is the collection of household garbage.
- Secure all household garbage in plastic bags or cans on your scheduled pick up day.
- Do not place any debris near or on a fence, mailbox, power line equipment, poles, transformers, downed electrical wiring, water meters or storm drains. Place it near the road so that it can be easily picked up from the debris removal trucks.
- Be prepared to repair possible damage to yard areas from the specialized equipment used to collect storm debris.
- Contact the City of South Pasadena Public Works Department at (727)-384-0701 or City Hall at (727)-347-4171 for updates on your collection services.

Rev. 04/2025

IMPORTANT!

****There is no reimbursement provided to any individual resident or condominium association who hires a private contractor to remove and dispose of storm-related debris.****

The City of South Pasadena asks all residents of the City to be our partners in restoring the City to its pre-storm state. Your cooperation and support enables the City of South Pasadena to complete the entire process in the quickest, safest and most efficient manner possible.



SPECIAL NEEDS

Hurricane Preparedness

The best time to prepare for an emergency is well ahead of time. When you prepare from a position of safety and calm, you and your caregivers can better cope with an emergency or disaster situation when it happens. An emergency or disaster may present unique challenges for people with disabilities and special needs. If you or someone you care for has a disability or special need, you may have to take additional steps to prepare yourself and your family.

Here's what you need to get ready for an emergency or disaster:

Form a Personal Support Network:

These are the people you should involve in your emergency planning and can help you in an emergency situation. They include your nearby family, friends, caregivers, neighbors and co-workers. Be sure to give at least one trusted member of your support network a key to your house or apartment. Also, let members of your support group know where you store your emergency kit. Most importantly, you should not rely on just one person, but have at least three or more people you can call on for help.

Complete a Personal Assessment:

Make a list of your personal needs and your resources. You need to take into account what you will be able to do for yourself and what assistance you may need before, during and after a disaster such as a hurricane. This should include daily living needs (personal care/personal care equipment, adaptive feeding devices and electricity-dependent equipment), your ability to get around before, during and after a disaster (cleaning up disaster debris, transportation and blocked roads) and evacuating if necessary.

Get Informed:

Know about the specific hazards that threaten your community (hurricanes, tornadoes, wildfires, etc.). Learn about community disaster plans and community warning systems and find out more about special assistance programs. Local citizens with disabilities and special needs should register with <https://pinellas.gov/special-needs>.

Write It Down:

Keep a copy of important phone numbers and other contact information for loved ones, medical providers and emergency services as part of your emergency communications plan.

Create an Emergency Kit:

Your emergency kit should have supplies specific to your special needs. A complete list of suggested items can be found on page 17.





DISASTER SUPPLY KIT CHECKLIST



General

- ☐ Two week minimum supply of medication, regularly used medical supplies, and a list of allergies
- ☐ A list of the style, serial number, and manufacturer information of required medical devices
- ☐ Batteries
- ☐ Flashlights
Do not use candles
- ☐ NOAA Weather Radio
Battery operated or hand cranked
- ☐ Cash
Banks and ATMs may not be available after a storm
- ☐ Cell phone chargers
- ☐ Books, games, puzzles or other activities for children

Phone Numbers

- ☐ Maintain a list of important phone numbers including:
County emergency management office, evacuation sites, doctors, banks, schools, veterinarian, a number for out of town contacts, friends and family

Clothing

- ☐ Rain gear such as jackets, hats, umbrellas and rain boots
- ☐ Sturdy shoes or boots and work gloves

Special Needs Items

- ☐ Specialty items for infants, small children, the elderly, and family members with disabilities

First Aid

- ☐ First Aid Manual
- ☐ Sterile adhesive bandages of different sizes
- ☐ Sterile gauze pads
- ☐ Hypoallergenic adhesive tape
- ☐ Triangular bandages
- ☐ Scissors
- ☐ Tweezers
- ☐ Sewing needle
- ☐ Moistened towelettes
- ☐ Antiseptic
- ☐ Disinfectant wipes
- ☐ Hand sanitizer
- ☐ Thermometer
- ☐ Tube of petroleum jelly
- ☐ Safety pins
- ☐ Soap
- ☐ Latex gloves
- ☐ Sunscreen
- ☐ Aspirin or other pain reliever
- ☐ Anti-diarrheal medicine
- ☐ Antacid
- ☐ Laxative
- ☐ Cotton balls
- ☐ Q-tips

Food and Water

- ☐ Food
Nonperishable packaged or canned food and beverages, snack foods, juices, baby food, and any special dietary items to last at least 7 days
- ☐ Water
1 gallon per person per day
- ☐ Non-electric can opener
- ☐ Paper plates
- ☐ Napkins
- ☐ Plastic cups
- ☐ Utensils

Important Documents

- ☐ Insurance cards
- ☐ Medical records
- ☐ Banking information
- ☐ Credit card numbers
- ☐ Copies of social security cards
- ☐ Copies of birth and/or marriage certificates
- ☐ Other personal documents
- ☐ Set of car, house, and office keys
- ☐ Service animal I.D., veterinary records, and proof of ownership
- ☐ Information about where you receive medication, the name of the drug, and dosage
- ☐ Copy of Will

**Items should be kept in a water proof container*

Vehicle

- ☐ Keep your motor vehicle tanks filled with gasoline

Pet Care Items

- ☐ Pet food and water to last at least 7 days
- ☐ Proper identification
- ☐ Medical records/microchip information
- ☐ A carrier or cage
- ☐ Muzzle and leash
- ☐ Water and food bowls
- ☐ Medications
- ☐ Supplies for your service animal

Find more disaster preparedness tips at
FloridaDisaster.org

ALL PROPERTY IN THE CITY LIMITS OF SOUTH PASADENA IS SUBJECT TO FLOODING!

CITY OF SOUTH PASADENA FLOOD FACTS

The National Flood Insurance Program (NFIP) policies issued or renewed in the City of South Pasadena receives a 10% premium discount. According to the Federal Emergency Management Agency (FEMA), this discount is the result of the City's qualifying as a Class 8 in the NFIP Flood Insurance Program's Community Rating System. The City has achieved this rating through activities such as maintenance of drainage facilities, regulation of stormwater discharge and distribution of this information as part of the Community Outreach Program.

Assistance is Available

Publications pertaining to property protection, flood safety, etc. can be obtained at South Pasadena City Hall – 7047 Sunset Drive South, South Pasadena, FL; at the Community Improvement Department – 6940 Hibiscus Avenue South, South Pasadena, FL; or through information links on the City of South Pasadena website: www.mysouthpasadena.com. Questions pertaining to flood zone, protection methods, flood elevation certificates, grant assistance, etc., please contact the City of South Pasadena Community Improvement Department at (727) 343-4192.

Flood Insurance Rate Maps

The most recent Flood Insurance Rate Map for South Pasadena went into effect on August 24, 2021. The new flood maps are available at <https://floodmaps.pinellascounty.org>. Since all of South Pasadena is in a Special Flood Hazard Area, it is important to know the base flood elevation of the property and the flood insurance purchase requirements. The City of South Pasadena has copies of elevation certificates for many structures in the community.

Are you insured?

Since 1851, only 18 hurricane seasons have passed without a known storm impacting the State of Florida. Property losses due to flooding are not covered under most standard homeowner insurance policies. You can protect your home and its contents with flood insurance through the National Flood Insurance Program (NFIP). NFIP is a federal program that enables property owners to buy flood insurance at reasonable rates in participating communities. In return, participating communities carry out flood management measures designed to protect life and property from future flooding. The Federal Emergency Management Agency (FEMA), through its Federal Insurance Administration, administers the NFIP.

As a Special Flood Hazard Area, flood insurance is required for all properties in the City of South Pasadena with a federally backed mortgage. To find out more about flood insurance for your property and its contents, contact your insurance agent. There is usually a waiting period before a flood insurance policy takes effects; so do not wait until a storm threatens before you secure the flood insurance you need.

Flood Threat

Flooding in South Pasadena can be caused by heavy rainfall that occurs in short periods of time, as is common during summer thunderstorms, and by tidal surges that accompany coastal storms, tropical storms and hurricanes. Hurricane tidal surges are the City's greatest threat and can cause flooding up to 24 hours before the "eye" of the storm reaches the coast. Because the City has low land elevations and abuts the Boca Ciega Bay, the flood threat is significant. FEMA has identified the entire City as a Special Flood Hazard Area on the Flood Insurance Rate Maps. These maps establish base flood elevations for development within these areas with the lowest permitted habitable flood levels ranging from 10 to 15 feet above sea level.

Flood Warning Systems

The Pinellas County Emergency Operations Center (EOC) works with the National Weather Service, the National Hurricane Center, and the local municipalities to monitor flood and storm threats. This information is then used to alert communities to the threats they are facing. Flood alerts are issued by: TV 8; TV 13; TV 10; and Bay News 9. For evacuation centers or other information on flooding, you can write to: Pinellas County Emergency Management, 10750 Ulmerton Rd., Building 1, Suite 267, Largo, FL 33778 OR visit <https://pinellas.gov/emergency-information/public-shelters>.

Storm Warnings

- Tropical storm watch: Tropical storm conditions are possible within 48 hours.
- Tropical storm warning: Tropical storm conditions are expected within 36 hours.
- Hurricane watch: Hurricane conditions are possible within 48 hours.
- Hurricane warning: Hurricane conditions expected within 36 hours. All preparations should be complete.



Rev. 04/2025



Flood Safety Measures

South Pasadena residents can protect themselves from flood hazards by taking measures to ensure the safety of life and property before, during, and after a flood occurs. These safety measures include:

Prepare Before the Storm

- Know your evacuation plan. Evacuation time for South Pasadena could take hours because the City's evacuation routes are prone to flooding early in a storm. Pinellas County has posted all primary evacuation routes with blue and white signs.
- Review your family disaster plan.
- Check your survival kit, important insurance papers, and have identification ready. Verify that you have food, water, medication and toiletry essentials early to avoid long lines and shortages.
- Prepare your home and yard (be sure you have all materials and tools necessary to shutter windows).
- If you have special needs, be sure your caregiver begins to implement your plan and you are registered for a special needs shelter if necessary.
- Gather special supplies for infants, children, seniors and pets.

Pinellas County EMS, the South Pasadena Fire Department and PSTA work together to provide evacuation assistance to those persons requiring special assistance enrolled in the County's special assistance program. If you are physically impaired or require special assistance to evacuate, write to:

Pinellas County Emergency Management, Public Safety Complex, 10750 Ulmerton Rd., Building 1, Suite 267, Largo, FL 33778

or call 727-464-3800 to register. You can also call your nearest fire department or home health care provider. Do not wait for a storm to strike! Write or call as soon as possible for an application requesting placement into the program.

Preparation for Evacuation

Keep a battery-powered radio tuned to local stations, and if an evacuation order is given, comply with it. Even if the evacuation order turns out to be unnecessary, leaving the area is better than potentially risking the loss of life by staying.

When preparing your home prior to evacuation, it is advisable to:

- Turn off all the electricity, with the possible exception of the power to your refrigerator;
- Fill your tubs, sinks, and any available containers with water, in case fresh water is not available after the storm (Sanitize tubs and sinks with bleach, rinse and then fill);
- Shut off your waterline to prevent any contaminated water from backing up into your house;
- Move as many valuables as possible to upper floors;
- Elevate furniture, if possible;
- Create floodway openings in non-habitable areas such as garage doors;
- Seal off sewer lines to the dwelling to prevent the backflow of sewer waters. After the storm the City will be working as quickly as possible to ensure a speedy and safe return to your homes.
- Keep a battery-powered radio with you so you can listen for emergency updates and news reports.
- Use a battery-powered flashlight to inspect a damaged home (The flashlight should be turned on outside before entering- the battery may produce a spark that could ignite leaking gas, if present).
- Stay off the streets. If you must go out, watch for fallen objects; downed electrical wires; and weakened walls, bridges, roads, and sidewalks.
- Do not drive through a flooded area- Don't Drown, Turn Around.
- Keep children away from the floodwaters, ditches, culverts and storm drains.
- Clean everything that has been wet.
- Use the phone only to report life-threatening emergencies.
- Watch out for animals, especially poisonous snakes.

More people are injured after a storm due to unsafe buildings, downed power lines, contaminated water, and other unsafe conditions than are injured in the storm itself. Carefully check for structural damage prior to entering a building. Use caution when re-entering the structure. Turn on electricity one breaker at a time and watch for smoke or sparks.

Property Protection

While recent construction practices and regulations have made new homes less prone to flooding, many existing structures remain susceptible. Retrofitting non-compliant buildings is a recommended approach to reduce flooding. While the property itself remains subject to flooding, the building is modified to prevent or minimize flooding of habitable space. Several approaches to retrofitting are:

- Elevation of the structure above flood protection levels
- Construction of barriers (floodwalls, berms)
- Dry flood proofing (water tight floor and wall systems)
- Wet flood proofing (construction that allows the entry and passage of flood water). This is only allowed for non-habitable structures.
- Removing or relocating items of value to higher elevation levels.

Floodplain Management

The City's Stormwater Management Regulations require new construction and substantial remodeling to meet stringent standards in order to increase the survivability of structures, reduce the cost of repair and reconstruction after a storm event, and ensure that reasonably priced flood insurance is available.

Rev. 04/2025



Drainage System Maintenance

The City continues to improve and maintain its stormwater management system. This has reduced the amount and duration of road and yard flooding during the rainy season. The City routinely inspects and performs maintenance on drainage ditches, catch basins, and culverts that comprise the City's stormwater drainage system. If you see any areas that may need additional maintenance or if you experience any localized drainage problems, please call South Pasadena Public Works Department at (727) 384-0701.

Permit Requirements

The City administers flood management regulations that are designed to minimize the potential of flood losses in the City. Any development requires a permit from the City of South Pasadena Community Improvement Department, which ensures that all construction meets the Flood Insurance Rate Map (F.I.R.M.) elevation requirements. Such regulations include minimum elevations of lowest living floor areas plus an additional two (2) feet of elevation known as freeboard. Flood proofing of non-residential property will also have an additional two (2) feet of freeboard added. The placement of fill shall only be allowed for stem wall foundation and limitations on non-substantial improvements, additions and reconstruction. Following NFIP standards, the City mandates that if the cost of any reconstruction, rehabilitation, addition or other improvements to a building equals or exceeds 50% of the building's depreciated value, then such work is considered a substantial improvement. The existing building is then required to meet the same standards as a new building.

The NFIP standards relating to substantial improvement are enforced through the development and building permitting process. Applicants for remodeling or repair of nonconforming structures (i.e., buildings which are not elevated to or above the base flood elevation) are required to submit a cost estimate of the improvement and, if necessary, an appraised value of the existing structure, to determine if the work constitutes a substantial improvement.

The building permit review is a necessary component of its participation in the NFIP, which makes flood insurance available to those who want to protect their property from flood damage. Development that occurs without permits threatens the City's continued participation in the NFIP and the ability to obtain flood insurance. If you see development occurring without permits, protect your rights and immediately contact the Community Improvement Department at (727) 343-4192. Two funding programs are available to reduce or eliminate the long-term risk of flood damage to buildings insured under the NFIP.

Flood Mitigation Assistance

Qualified mitigation activities include elevation of the existing home or commercial structure, acquisition of the property, or relocation of insured structure out of the floodplain. The structure must be insured under the NFIP and have suffered 2 or more flood losses; each with a claim of at least \$1,000 within any ten-year period since 1978.

Severe Repetitive Loss Program

A Severe Repetitive Loss property is defined as a residential property that is insured under the National Flood Insurance Program and has at least 4 flood insurance claim payments (building and contents) over \$5,000 each, and the cumulative amount of such claims payments exceeds \$20,000 within any ten-year period; Or has at least 2 separate flood insurance claims payments (building payments only) have been made with cumulative amount of the building portion of such claims exceeding the market value of the building within any ten-year period.

For more information go to:

FEMA/NFIP at www.fema.gov

**Pinellas County Emergency Management at
www.pinellascounty.org/emergency**

**Florida Department of Emergency Management at
www.floridadisaster.org**

**The Official Hurricane Guide for Pinellas County at
<http://www.pinellascounty.org/emergency/default.htm#hurricaneguide>**

Rev. 04/2025

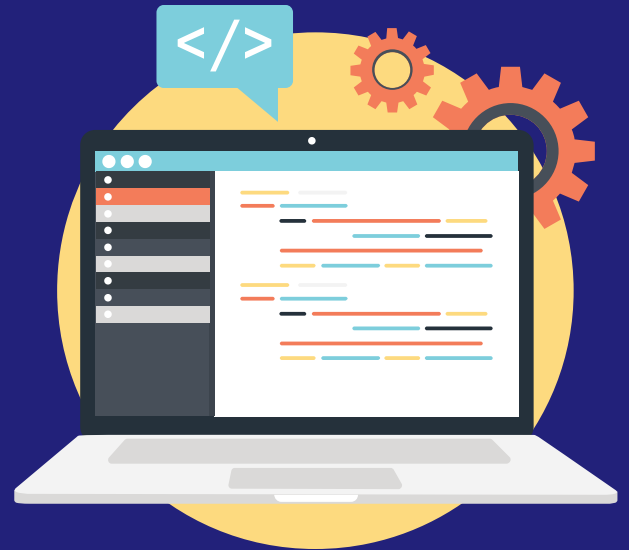


PUBLIC FLOOD WEBSITE AVAILABLE FOR CITY OF SOUTH PASADENA PROPERTY OWNERS

The City of South Pasadena has a public flood website available for the community to access flood risk data on their properties.

Forerunner is a floodplain management platform that delivers actionable, property-level flood risk information to create efficient methods of floodplain management, compliance and outreach.

This platform will improve the City's flood risk management efforts by maximizing resources and creating automated systems and processes that provides potentially life and property-saving data to its residents.



OUR PROXIMITY TO THE GULF



Due to our close proximity to the Gulf of Mexico, our community faces an extreme risk of flooding.

That's why it is so vital that our residents and business owners understand the risks for their individual properties.

It's equally important that the team tasked with managing our community's flood risk and enforcing floodplain guidelines are equipped with resources needed to effectively do this critical work.

South Pasadena has been utilizing Forerunner as a public resource which will give every resident and business owner access to flood risk data for individual properties, which in turn will make it easy for homeowners, contractors, insurance agents, realtors and more to learn about the building and insurance compliance requirements associated with each individual property.

Forerunner allows South Pasadena to better serve its residents and businesses, and will be available at <https://southpasadenafl.withforerunner.com> and at mysouthpasadena.com.



UPCOMING SCHEDULED COMMISSION MEETINGS

Meeting dates listed are tentative and are subject to change. Please check the City's website or call the City Clerk's office at 727-347-4171 for up-to-date information about meeting dates.

April 1	9:00am	Agenda & Administrative Workshop Meeting
April 8	7:00pm	Regular Commission Meeting
April 15	9:00am	Administrative Workshop Meeting
May 6	9:00am	Agenda & Administrative Workshop Meeting
May 13	7:00pm	Regular Commission Meeting
May 20	9:00am	Administrative Workshop Meeting
June 3	9:00am	Agenda & Administrative Workshop Meeting
June 10	7:00pm	Regular Commission Meeting
June 17	9:00am	Administrative Workshop Meeting
June 24	9:00am	Agenda & Administrative Workshop Meeting
July 1	9:00am	Regular Commission Meeting

Additional workshops may be scheduled as needed during the budget process.

COMMISSION MEETINGS

South Pasadena City Commission Meetings are broadcast live on Spectrum Channel 643 and rebroadcast the following Wednesday and Monday at 11:00 a.m.



Commission meetings can also be viewed on South Pasadena's official YouTube channel:

www.youtube.com/@CityofSouthPasadenaFL

Recognition of Service

The following employees are celebrating milestones anniversaries with the City:

Nickolas Rasmussen – 25 Years

Chris Bombicino – 5 Years

Leonard McCudden – 5 Years

Jeffrey Ulevich – 25 Years

Holiday Schedule

APRIL 18 – GOOD FRIDAY– CITY HALL CLOSSES 12 NOON

MAY 26 – MEMORIAL DAY HOLIDAY – CITY OFFICES CLOSED

JUNE 19 – JUNETEENTH – CITY OFFICES CLOSED

JULY 4 – INDEPENDENCE DAY HOLIDAY – CITY OFFICES CLOSED

**PLEASE REMEMBER TO CALL 9-1-1
IN CASE OF AN EMERGENCY,
DO NOT CALL THE FIRE DEPARTMENT
ADMINISTRATION NUMBER.**

**Brochures and pamphlets on environmentally friendly landscaping are available
at the Public Works Department or call 727-384-0701.**

CITY HALL

7047 Sunset Dr. South
Hours: 8:00 a.m. – 4:00 p.m.

**Mayor, Commission,
Finance & Administration
Departments**

Phone: 727-347-4171
Fax: 727-345-0518

FIRE STATION 20

1477 Pasadena Ave. South

Public Safety Department

Phone: 727-344-1666
Fax: 727-381-4324

Pinellas County Sheriff

Phone: 727-582-6200

CITY HALL ANNEX

6940 Hibiscus Ave. South
Walk-in Hours: 7:30 a.m. – 12:30 p.m.

Community Improvement Department

Phone: 727-343-4192
Fax: 727-381-4819

Public Works Department

Phone: 727-384-0701
Fax: 727-347-4254

